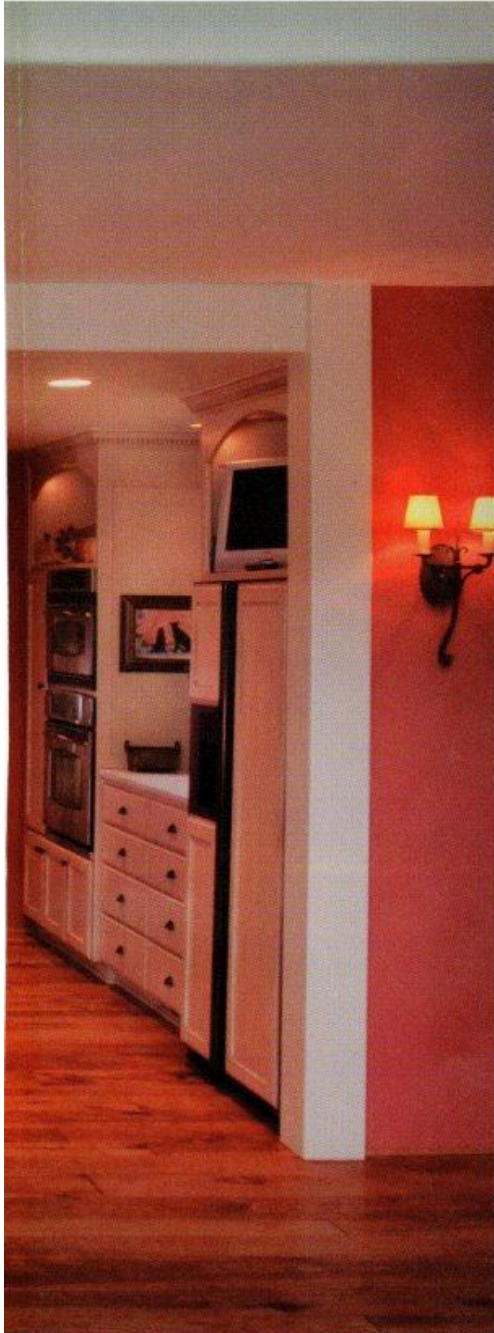


STORY BY Amy Perez
PHOTOGRAPHY BY Randy Johnson



Comfort with a View

COMFORT AND
STYLE BY DESIGN

The Burgesses wanted a practical, comfortable kitchen.

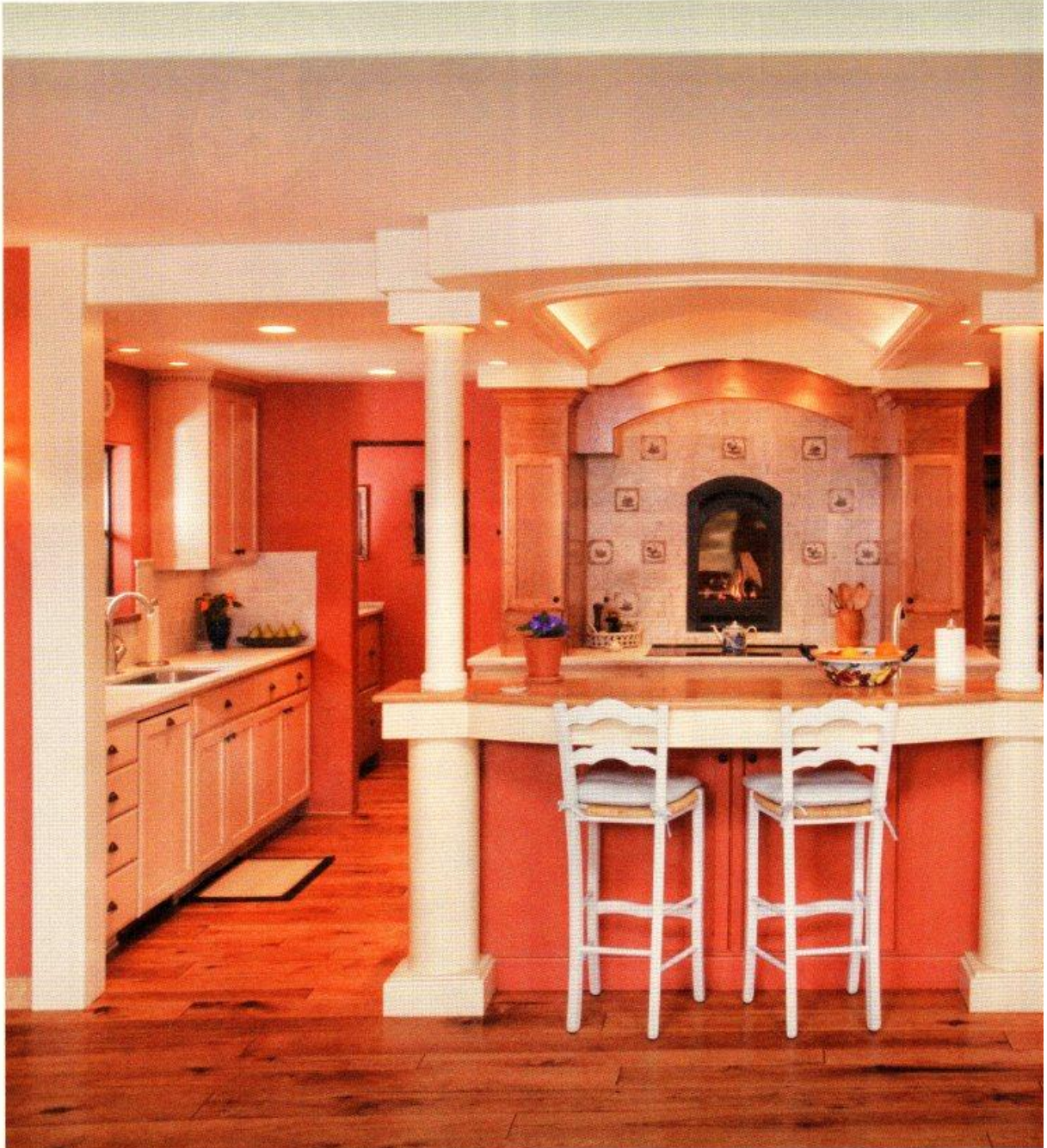
what first enticed Bob and Carolyn Burgess is what first beguiles guests to their home—the view. One look at the stunning panoramic view of Smith Rock State Park and a bird's eye view of the Crooked River four years ago, and they were sold. In 2006, the Burgesses built their new home in Terrebonne's Ranch at the Canyons community. Ever since, they've been enjoying the view.

Bob and Carolyn took full control of designing their home, paying crucial attention to a layout designed to capture the striking external panorama. The interior reflects late Renaissance and French country influence with an eclectic touch that makes the décor uniquely theirs. They wanted a kitchen that is intimate and unique, comfortable for daily life yet practical for entertaining. "We spend a lot of time in the kitchen, so we wanted to feature the views in here as well," says Carolyn.

Denny Drury, owner of DL Drury Cabinets in Bend, has been successfully helping customers build their dream kitchens for decades. "One of the most difficult things was to find someone to carry out our vision," says Carolyn. "We chose to work with Denny because he strived to complete our vision as we imagined it." He worked directly with Carolyn to design a small-scale kitchen focused on beauty and functionality, all the while eliminating clutter and providing superior customized storage space and practical conveniences.



DWELL
a kitchen story

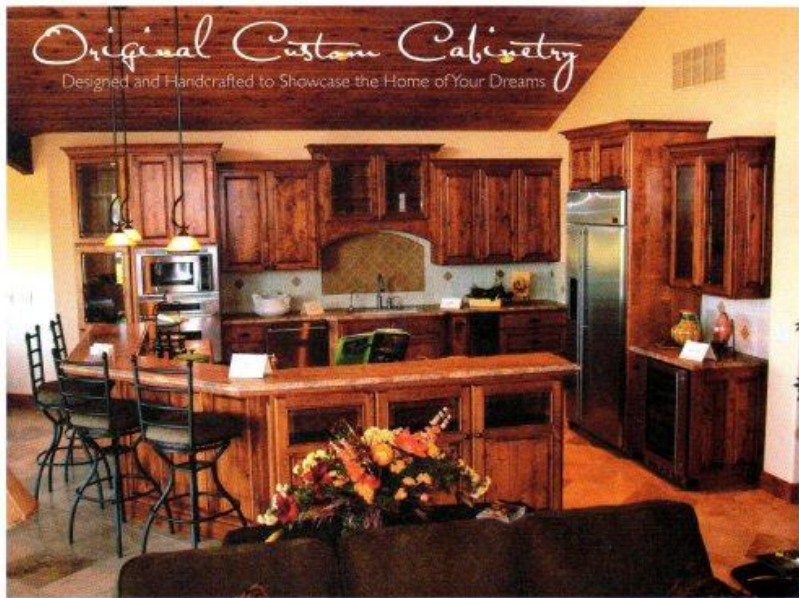




AESTHETICS AND PRACTICALITY

To truly grasp the impact of this dream kitchen one must understand the downright mythical awesomeness that the view presents. Directly off the terrace is a steep drop into Smith Rock State Park, with the meandering Crooked River below. With Monkey Face to the left of the river and the dramatic Christian Brothers and Dihedrals' cliffs to the right, whether indoors or outside enjoying the terrace one cannot escape the impressive magnitude of this scenery.

The kitchen layout sets a cordial stage for entertaining with a large island framed by columns, a marble workstation and an attached bar with seating. The primary cooking area is directly behind with all appliances and necessities just steps away. Next to the kitchen is a cozy dining area with patio doors leading to a peaceful terrace.



Original Custom Cabinetry
 Designed and Handcrafted to Showcase the Home of Your Dreams

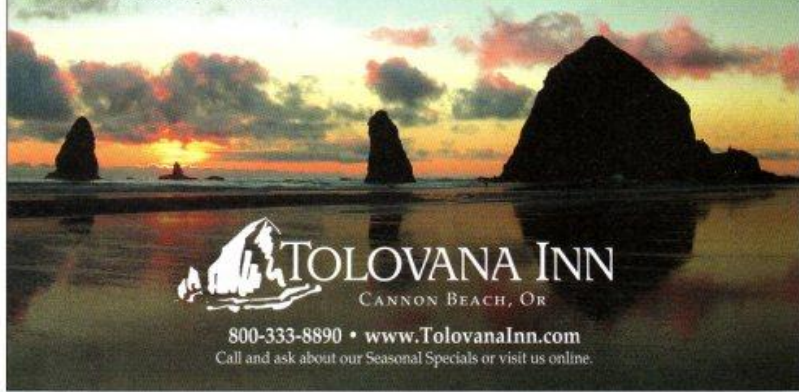
DL DRURY
Custom Woodworks

63521 Boyd Acres Road
 Bend, Oregon 97701
 (541) 382-9464

TOLOVANA INN
A CANNON BEACH TRADITION

A visit to Cannon Beach is one of the best traditions on the Oregon Coast. Bountiful art galleries and unique restaurants. Beautiful sunsets behind Haystack Rock. And of course, romantic visits to Tolovana Inn.

Just five minutes south of Cannon Beach, Tolovana offers oceanfront suites with gas fireplaces, an indoor pool, spa, sauna and an on-site masseuse. Come relax with us soon and enjoy the comfort and pure luxury of Tolovana Inn, a Cannon Beach tradition.



TOLOVANA INN
 CANNON BEACH, OR

800-333-8890 • www.TolovanaInn.com
 Call and ask about our Seasonal Specials or visit us online.

AREA RUG CONNECTION
INDIA
A Rug For Every Reason

ALL
Prices
Styles
Colors
Textures
Qualities
Varieties

541-388-9013 • 555 NW Arizona Ave. • Near the Corner of Bond & Arizona

**Experience
Steak Stimulus**

Steak & Wine
Blacksmith Ribeye & a Big
Beautiful Glass of Wine
All for \$26

Sunset Dining
Select from our Four
Course Menu from 4:30
to 5:30 Every Night
All for \$24

541.318.0588
211 NW Greenwood Ave, Bend, OR 97701
www.bendblacksmith.com

Blacksmith
restaurant • bar lounge



DWELL
**a kitchen
story**

and impressive vista. Come summertime, guests will find the Burgesses out on the patio with the barbecue smokin' away.

Behind closed cabinets and within secret drawers lie the customized amenities that make the Burgesses' dream kitchen. To eliminate clutter, petite garages were created by Drury that neatly tuck small appliances out of sight and cabinets were created to contain trash and recycle receptacles. A refrigerated crisper drawer keeps daily favorites at an arms' reach, pulling directly out from the island's workstation and allowing for convenience at its best. To keep vegetables such as onions and potatoes fresh for longer periods of time, a special vegetable drawer was incorporated into the workstation as well.

The painted maple cabinets, made with the most advanced hardware for durability and ease of use, blend perfectly with the decor. With customized storage areas for oversized plates and containers, a refreshment center and a separate pantry area with deep drawers and pull out shelving, the homeowners will never have to compromise their clutter-free kitchen environment.

The main function of a kitchen is to provide a place to cook. No dream kitchen would be complete without the most high-tech appliances. True to European style, the Burgesses chose stylish stainless steel appliances and a sleek black electric stove top from the GE Profile series. Kohler sinks and a warming tray under the stovetop complete the list of precision tools every chef loves.

Carolyn and Bob share a common interest for things that are unique and have character. Two signature features that add individuality and style to their dream kitchen—the charming domed ceiling with ambient inset lights that adds a distinctly European flare and the Carrera marble countertops, specially chosen from Portland for their rich color and marbling pattern. The countertops were also customized by added height for the homeowners comfort, making the workspace a more functional place to prepare meals and serve from with ease while guests sit and enjoy the outside vistas.

The Burgesses dream kitchen is practical, unique and lovely. The space and the view are the perfect culmination of elements that result in an unparalleled dining experience. §

see page 182 for sources